

Rittal – The System.

Faster – better – everywhere.

Digital Brochure

ENCLOSURES

POWER DISTRIBUTION

CLIMATE CONTROL

IT INFRASTRUCTURE

SOFTWARE & SERVICES



Rittal – The System.

Faster – better – everywhere.



System Accessories

Base/Plinth

Flex-Block Base/Plinth System	424
TS Base/Plinth	426
Base/Plinth	433

Base

Base	435
------------	-----

Walls

Sidewalls	450
Partition Walls	453
Interconnect Kit	458

Baying Systems

Baying	460
--------------	-----

Doors/Locks

Door Models	467
Expansion Accessories for TS Modular Front Design	469
Viewing Windows/Operating Panels	473
Lock Systems	478
Hinges	492
Door, External/Internal	493

Roof/Wall Mounting

Roof	499
Wall Mounting	503

Interior Fittings

Mounting Plates	507
Rail Systems	514
Assembly Components	533
Component Shelves	540
System Lights	545
EMC	551
Interior Fittings for Areas at Risk of Earthquake	554
Grounding	555

Cable Routing

Cable Entry	561
Flange Plates	564
Cable Gland	568
Cable Gland	569
Cable Management	572
Cable Routing 19"	582

19" Installation System

Pivoting Frame	587
Accessories for Data Rack	591
Profile Rails	592
Slide Rails	596
19" Fittings	598
Patch Panels	603
Splicing Boxes	604

Human/Machine Interface

Handles	605
External Mounting Accessories	607
Front Fittings	608
Keyboards, Supports and Drawers	610
Interfaces	617
Signal Pillars	619

Technical Information

RittalXpress	622
CE/Grounding/HD/Model Numbers	623
Protection Categories	624
NEMA	625
Approvals/Equipment Grounding Conductor	627
Coating/Spray Finish	628



Roof/Wall Mounting

Wall mounting

Slotted wallmount bracket

for KL, EB, JB, AE, WM

This bracket has similar functionality to a standard NEMA flange plate, in that the slot on the lower bracket can be used for installation or removal.

Supply includes:

- 1 set = 4 pc(s).

Material	Packs of	Model No.	Model No.
Zinc-plated	1 set(s)	8018.790	WMSMB
Stainless steel 316L	1 set(s)	8018.791	WMSMB6



Wall mounting bracket

To mount KL, JB, EB, BG and IT housings based on EL.

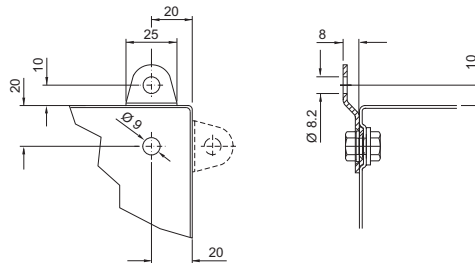
Supply includes:

- Assembly components for mounting on housing

Note:

- For hygiene reasons, and in view of the protection category, the stainless steel housings do not have any drilled holes for the wall mounting brackets

Material	Wall clearance inches (mm)	Packs of	Model No.
Brass, nickel-plated	0.3 (8)	4 pc(s)	1580.000
Carbon steel, zinc-plated	0.3 (8)	4 pc(s)	1590.000
Stainless steel 1.4301 (AISI 304)	0.3 (8)	4 pc(s)	1594.000



Wall mounting bracket

for AE, WM

For external mounting on the housing. Simply insert the expandable dowel into the housing hole from the outside, and screw-fasten the wall bracket from the outside.

Material:

- Carbon steel

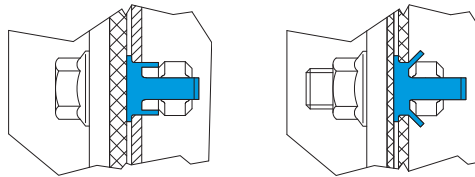
Surface finish:

- Zinc-plated

Supply includes:

- Wall bracket pre-fitted with seal and expandable dowel

Wall clearance inches (mm)	Packs of	Model No.
0.6 (15)	4 pc(s).	2508.100



Roof/Wall Mounting

Wall mounting



Wall mounting bracket

To mount KL, EB, BG, AE, CM, IT housings based on EL and AE, TP top pieces.

Supply includes:

- Assembly components for mounting on housing

Note:

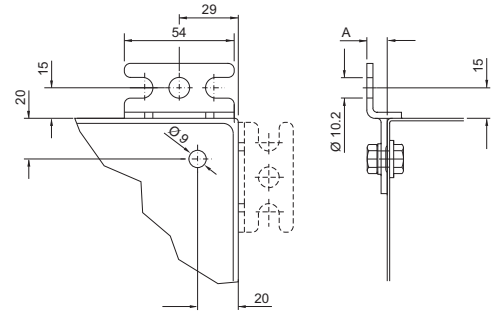
- Item 2503.010 is only suitable for use up to a depth of 600 mm

Material	Wall clearance (A) inches (mm)	Packs of	Model No.
Carbon steel, zinc-plated	1.6 (40)	4 pc(s).	2503.010
	0.4 (10)	4 pc(s).	2508.010
Stainless steel 1.4301 (AISI 304)	0.4 (10)	4 pc(s).	2433.000
Stainless steel 1.4404 (AISI 316L)	0.4 (10)	4 pc(s).	2433.500



Possible alternative:

- Hygienic Design wall spacer bracket, see page 164



Wall mounting bracket

for KS

To enable wall-mounting of the enclosure from the outside of the enclosure only.

Material:

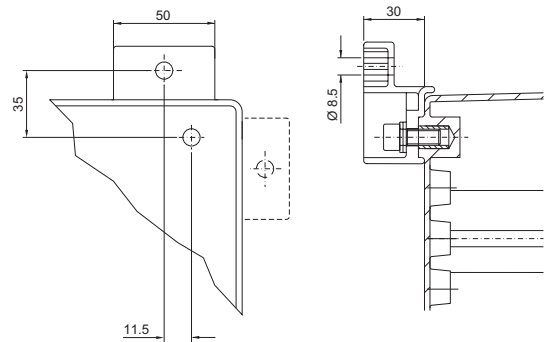
- Fiberglass-reinforced polyamide¹⁾

Supply includes:

- Assembly components for mounting on housing

Color	Packs of	Model No.
Similar to RAL 7035	4 pc(s).	1483.010
Similar to RAL 9011	4 pc(s).	9266.000¹⁾

¹⁾ With graphite additive for Ex applications



Roof/Wall Mounting

Wall mounting

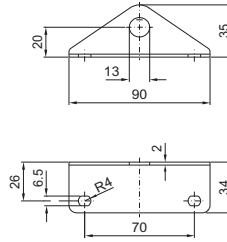
Wall mounting angle

For compact enclosures (additional holes must be drilled in the housing).

Supply includes:

- Assembly components for mounting on housing

Material	Color	Packs of	Model No.
Carbon steel	RAL 7035	4 pc(s).	2505.510
Stainless steel 1.4301 (AISI 304)	-	4 pc(s).	2583.010



Wall bracket

For wall mounting of TS and SE enclosures on the roof, suitable for enclosures with minimal depth and heavy components on the door or built-in pivoting frame.

Material:

- Carbon steel

Surface finish:

- Zinc-plated

Packs of	Model No.
4 pc(s).	4595.000



Possible alternative:

- On TS 8 inside the enclosure (without mounting plate) buying attachment 8800.470, see page 464



Pole clamp

for KL, EB, AE, KS

For reliable, convenient fastening to round or square poles.

For pole diameter/size:

- Ø from 40 to 190 mm
- □ from 50 to 150 mm

Material:

- Profile rails, clamping section: Carbon steel
- Clamping strap: Stainless steel 1.4301 (AISI 304)

Surface finish:

- Profile rail, clamping section: Zinc-plated

Supply includes:

- 2 profile rails, 600 mm long
- 4 clamping sections
- 2 clamping straps
- 4 clamping brackets
- 4 screws and M8 captive nuts for mounting on the enclosure

Packs of	Model No.
1 set(s)	2584.000



Roof/Wall Mounting

Wall mounting



Housing connectors

Adjustable

Between command panels, terminal boxes, compact enclosures and horizontal or vertical surfaces. Pre-assemble the two halves of the connector, slide into one another and fasten with locking screw and/or adjust the pivot bracket.

Pivot range:

– $\pm 105^\circ$ adjustable in 7.5° stepped increments

Material:

– Die-cast zinc

Surface finish:

– Powder-coated

Color:

– RAL 7035

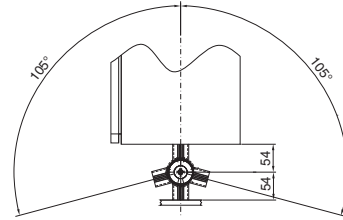
Supply includes:

– Assembly components for both sides

Packs of	Model No.
1 set(s)	6016.200

Note:

– The locking screws may be exchanged for standard, commercially available clamping levers (M10 x 50 mm)



Frame connector, adjustable

for Comfort Panel

Between command panels and keyboard housing and horizontal or vertical surfaces.

Pivot range:

– Adjustable in 8° stepped increments, see drawing

Material:

– Die-cast zinc

Surface finish:

– Powder-coated

Color:

– RAL 7024

Supply includes:

– Assembly components and clamping levers for both sides

Packs of	Model No.
1 set(s)	6005.500

